

DESCRIPTION	REVISIONS	DATE

**SH-48 OVER THE CIMARRON RIVER
CONSTRUCTION SEQUENCE NOTES**

MAINTAIN ONE ALTERNATING LANE OF TRAFFIC FOR SH-48 AT ALL TIMES.

PHASE I

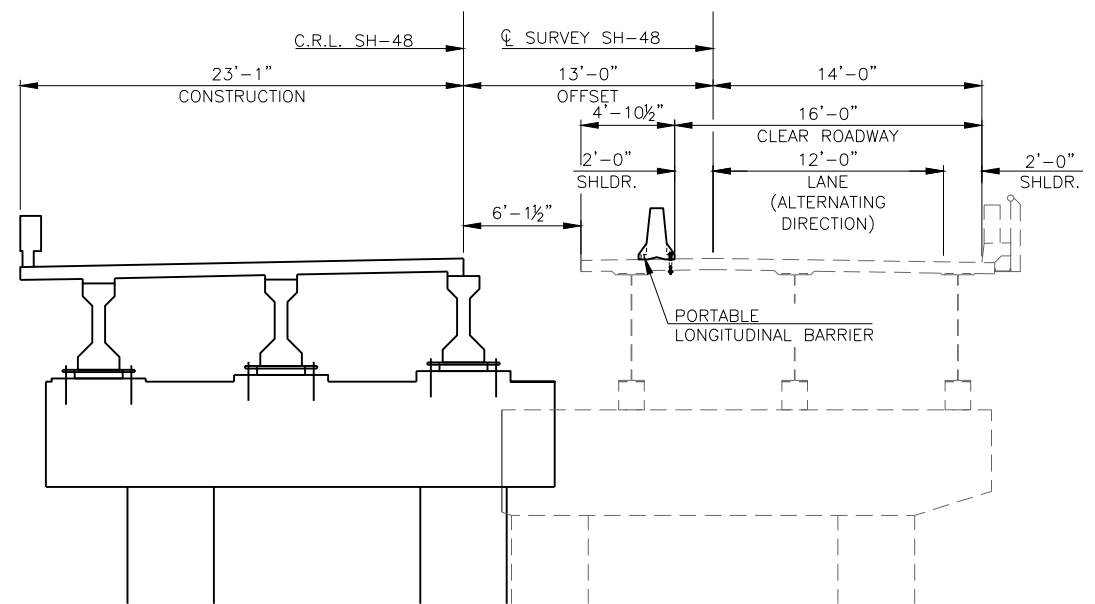
1. PLACE PORTABLE LONGITUDINAL BARRIER ON EAST SIDE OF EXISTING STRUCTURE AND MOVE TRAFFIC.
2. REMOVE WEST SIDE OF EXISTING STRUCTURE INCLUDING PIER CAP 6" FROM WEST PIER COLUMN.
3. CONSTRUCT ONE HALF OF NEW BRIDGE.

PHASE II

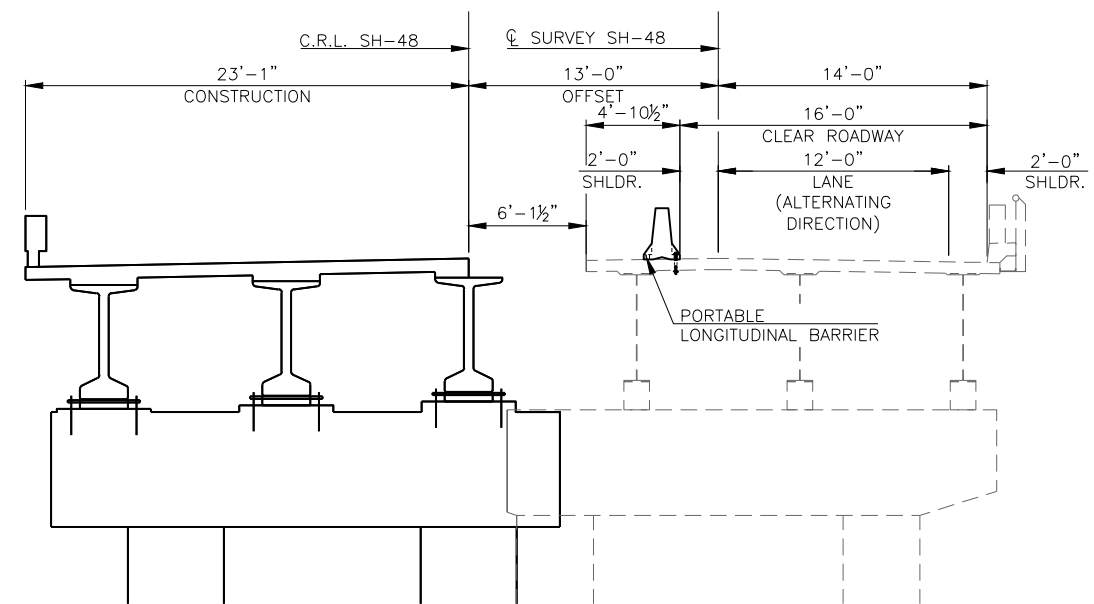
1. REPLACE PORTABLE LONGITUDINAL BARRIER ON NEW SIDE OF BRIDGE AND MOVE TRAFFIC.
2. REMOVE REMAINING SIDE OF EXISTING STRUCTURE.
3. CONSTRUCT REMAINDER OF THE NEW BRIDGE.
4. REMOVE ALL PORTABLE LONGITUDINAL BARRIERS AND MOVE TRAFFIC TO FINAL LANE CONFIGURATION.

NOTE:
PORTABLE LONGITUDINAL BARRIER SHALL BE ANCHORED TO THE DECK AND APPROACH SLABS.

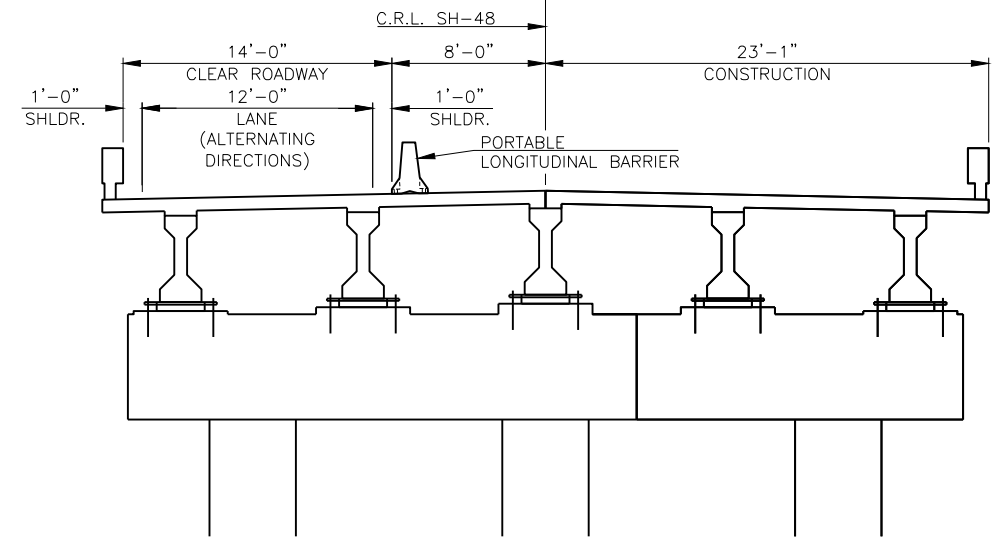
NOTE:
PHASE I EXISTING AND NEW SUBSTRUCTURES DO NOT CONFLICT. REFERENCE GENERAL PLAN & ELEVATION.



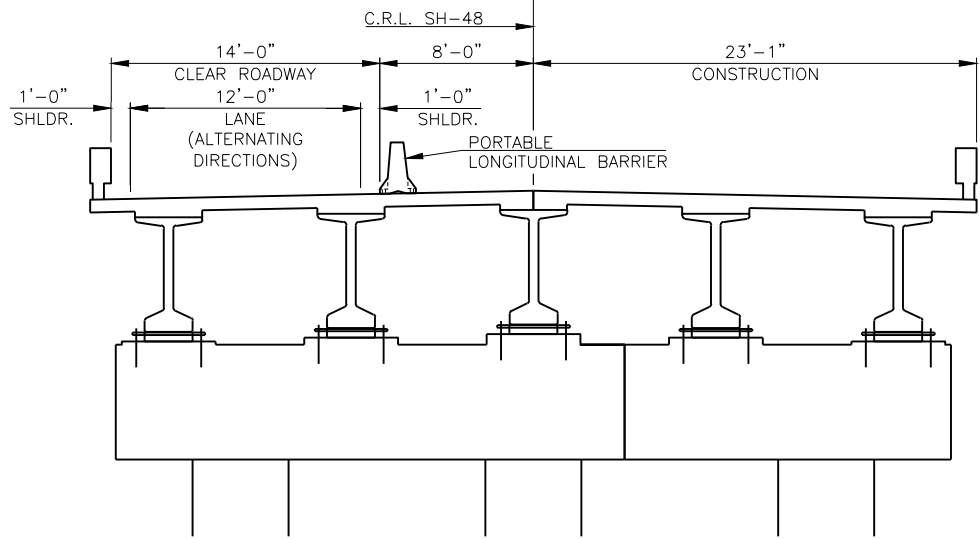
PHASE I
SPANS 1 & 2



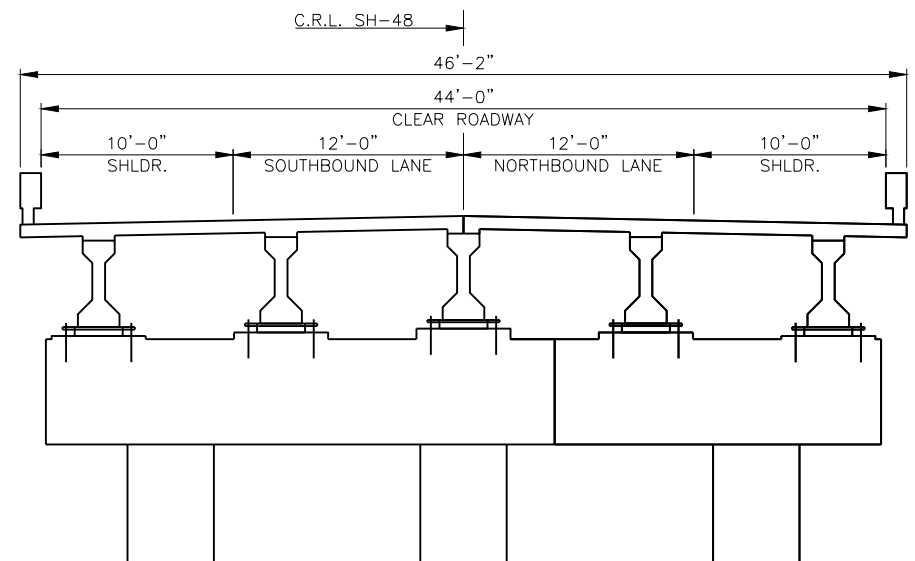
PHASE I
SPANS 3-7



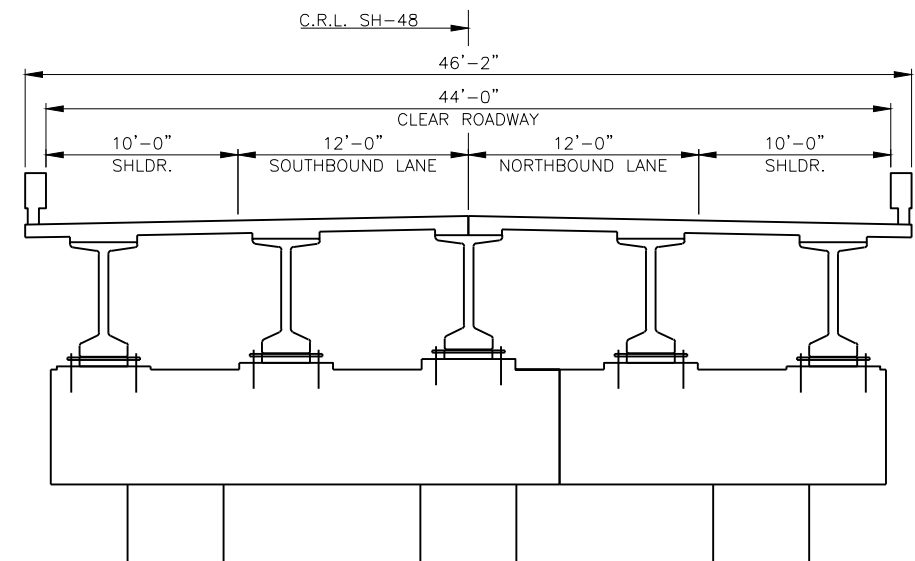
PHASE II
SPANS 1 & 2



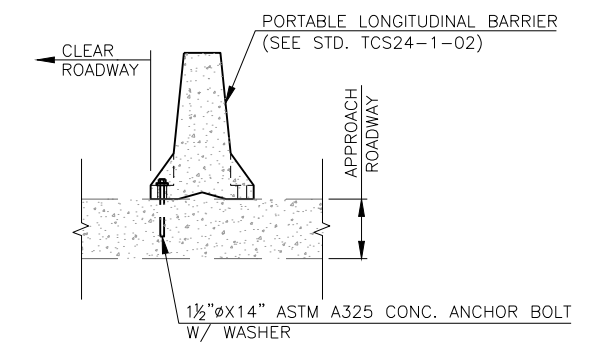
PHASE II
SPANS 3-7



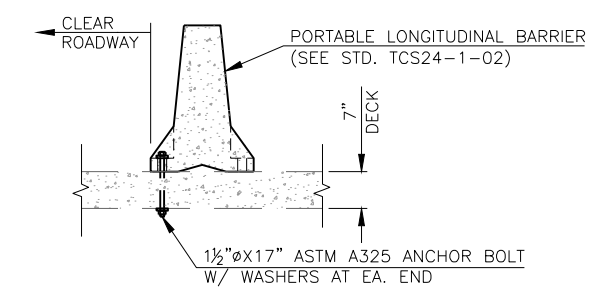
FINAL CONSTRUCTION
SPANS 1 & 2



FINAL CONSTRUCTION
SPANS 3-7



AT APPROACH SLAB



AT BRIDGE DECK

TEMPORARY BARRIER DETAILS

NOTE:
PORTABLE LONGITUDINAL BARRIER SHALL NOT BE ANCHORED TO THE NEW BRIDGE DECK OR APPROACH SLAB.

PROVIDE PORTABLE LONGITUDINAL BARRIER ANCHORS AS DETAILED TO ANCHOR TO THE EXISTING BRIDGE DECK AND APPROACH. ALL COST OF BOLTS WITH WASHERS AND NUTS, INCLUDING ALL LABOR, MATERIALS, EQUIPMENT, AND INCIDENTALS SHALL BE INCLUDED IN THE PRICE BID FOR "PORTABLE LONGITUDINAL BARRIER".

DESIGN	B.J.K.	SH-48 OVER CIMARRON RIVER	CREEK COUNTY
DRAWN	B.J.K.	CONSTRUCTION SEQUENCE	
CHECKED	M.R.S.		
APPROV.	B.J.K.		
SQUAD	CEC		
		JOB PIECE NO. 27925(04)	SHEET NO. 28